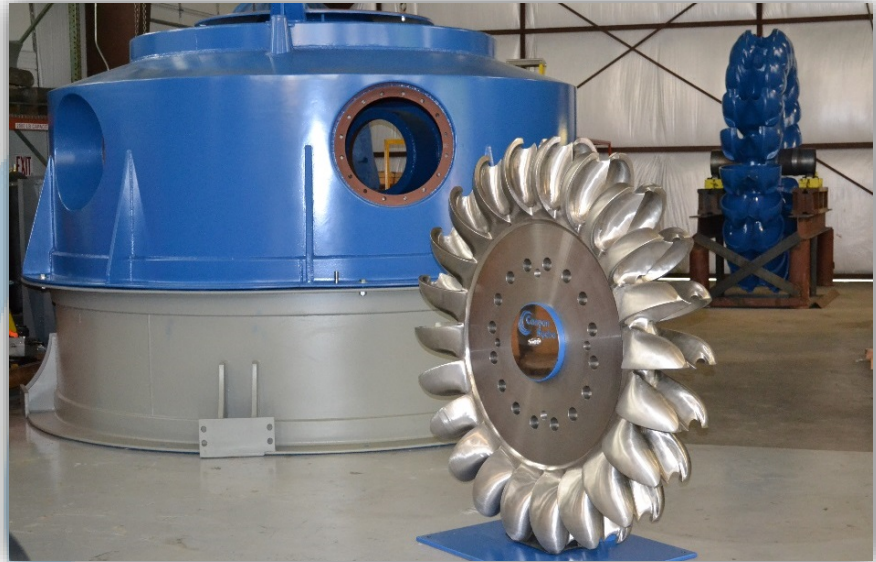




## Canyon Industries, Inc.

Since 1976, Canyon Industries has been involved in the manufacture of high-quality hydroelectric systems. As such, the company currently has two large manufacturing facilities: a 24,000 square foot fabrication facility in Deming, WA, and a 30,000 square foot precision machining center in Sumas, WA.

The Deming facility is capable of many types of ferrous and non-ferrous fabrication, and includes a high bay shop with 15-ton crane that allows handling of oversize projects. The Sumas facility features several large precision CNC centers, crowned by a 7-axis contouring mill with 25-ton capacity. Canyon is also equipped to repair or build large castings for mechanical equipment.



*Figure 1: A structural steel housing and two stainless castings fully CNC machined by Canyon Hydro*



*Figure 2: Final CNC machining of a stainless steel casting on Canyon's large 7-axis mill*

Canyon Industries specializes in heavy steel manufacturing, large machining projects, and oversize equipment rebuilds. A fully-staffed engineering team is available for comprehensive design, analysis, and project management services. Canyon offers quality services, quick turn-arounds, and competitive pricing.

For inquiries, please contact:

Eric Melander

[eric.melander@canyonhydro.com](mailto:eric.melander@canyonhydro.com)

Vice President of Sales



## Canyon Industries, Inc. Machining Capabilities

**FPT SYNTHESIS 7-AXIS HBM**  
X) 432", Y) 110", Z) 45", W) 30", B) 360°  
ROTARY TABLE 64" X 64"  
10000 RPM STRAIGHT HEAD SPINDLE  
5000 RPM INDEXABLE HEAD (C- 180°, A - 360°)



**OKUMA 50 VA VERTICAL MILL**  
X) 41", Y) 20", Z) 22"  
PROGRAMABLE ROTARY 360°  
TABLE SIZE 20" X 51"  
5000 RPM SPINDLE



**HAAS VF8 VERTICAL MILL**  
X) 64", Y) 40", Z) 30"  
TABLE SIZE 64" X 36"  
5000 RPM SPINDLE



**HAAS VF3 VERTICAL MILL**  
X) 64", Y) 20", Z) 30"  
TABLE SIZE 64" X 36"  
10000 RPM SPINDLE



**KURAKI KBT 15**  
X) 118", Y) 78", Z) 51", W) 27"  
B) CONTOURING ROTARY TABLE 70" x 86"  
1500 RPM Spindle



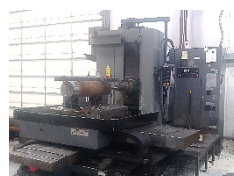
**KURAKI KBT 13**  
X) 118", Y) 78", Z) 51", W) 27"  
B) CONTOURING ROTARY TABLE 64" x 72"  
1500 rpm Spindle



**KURAKI KBT 11**  
X) 66", Y) 46", Z) 45", W) 19"  
B) CONTOURING ROTARY TABLE 47" x 55"  
1500 rpm spindle



**KURAKI KBT 10**  
X) 59", Y) 39", Z) 31", W) 19"  
B) CONTOURING ROTARY TABLE 38" x 43"  
1500 rpm spindle





## Canyon Industries, Inc. Fabrication Capabilities

- High bay shop with 15-ton overhead crane
- 25-ton lifting capability
- Ferrous and non-ferrous welding equipment
- Blasting and painting facilities
- Automatic bandsaw for cutting quantities of same-length material
- A crew of highly trained polishers for precision finishing of castings and machined parts



*Figure 3: A572 steel housing and ANSI 300 Class water delivery system at Canyon's Deming facility*

### **ASTM/ASME A515-70 Welding Procedure Index (additional available upon request):**

1. CII-01 – FCAW, Fillet, Unlimited thickness, PQR 3F
2. CII-02 – FCAW, Fillet, Unlimited thickness, PQR 1F & 3F
3. CII-03 – FCAW, Double “V”, 1/8” – 2-1/2” thickness, PQR 3G
4. CII-04 – FCAW, Double “V”, 1/8” – 2-1/2” thickness, PQR 1G & 3G
5. CII-05 – SMAW, Fillet, Unlimited thickness, PQR 3F
6. CII-06 – SMAW, Fillet, Unlimited thickness, PQR 1F & 3F
7. CII-07 – SMAW, Double “V”, 1/8” – 2-1/2” thickness, PQR 3G
8. CII-08 – SMAW, Double “V”, 1/8” – 2-1/2” thickness, PQR 1G & 2G



*Figure 4: 4.3 meter diameter A572 steel housing and ANSI 300 Class water delivery system fabricated by Canyon*