



Canyon Industries, Inc.

Since 1976, Canyon Industries has been involved in the manufacture of high-quality hydroelectric systems. As such, the company currently has two large manufacturing facilities: a 24,000 square foot fabrication facility in Deming, WA, and a 30,000 square foot precision machining center in Sumas, WA.

The Deming facility is capable of many types of ferrous and non-ferrous fabrication, and includes a high bay shop with 15-ton crane that allows handling of oversize projects. The Sumas facility features several large precision CNC centers, crowned by a 7-axis contouring mill with 25-ton capacity. Canyon is also equipped to repair or build large castings for mechanical equipment.

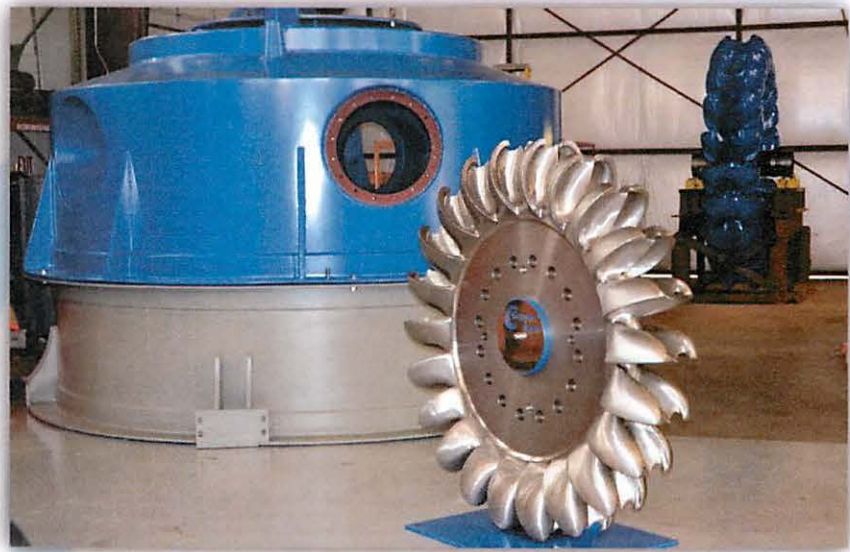


Figure 1: A structural steel housing and two stainless castings fully CNC machined by Canyon Hydro



Figure 2: Final CNC machining of a stainless steel casting on Canyon's large 7-axis mill

Canyon Industries specializes in heavy steel manufacturing, large machining projects, and oversize equipment rebuilds. A fully-staffed engineering team is available for comprehensive design, analysis, and project management services. Canyon offers quality services, quick turn-arounds, and competitive pricing.

For inquiries, please contact:

Brett Bauer

brett.bauer@canyonhydro.com
Vice President of Engineering

Loren Sweitzer

loren.sweitzer@canyonhydro.com
Vice President of Production

Eric Melander

eric.melander@canyonhydro.com
Vice President of Sales



Canyon Industries, Inc. Machining Capabilities

FPT SYNTHESIS 7-AXIS HBM

X) 432", Y) 110", Z) 45", W) 30", B) 360°

ROTARY TABLE 64" X 64"

10000 RPM STRAIGHT HEAD SPINDLE

5000 RPM INDEXABLE HEAD (C- 180°, A - 360°)



OKUMA 50 VA VERTICAL MILL

X) 41", Y) 20", Z) 22"

PROGRAMABLE ROTARY 360°

TABLE SIZE 20" X 51"

5000 RPM SPINDLE



HAAS VF8 VERTICAL MILL

X) 64", Y) 40", Z) 30"

TABLE SIZE 64" X 36"

5000 RPM SPINDLE



HAAS VF3 VERTICAL MILL

X) 64", Y) 20", Z) 30"

TABLE SIZE 64" X 36"

10000 RPM SPINDLE



KURAKI KBT 15

X) 118", Y) 78", Z) 51", W) 27"

B) CONTOURING ROTARY TABLE 70" x 86"

1500 RPM Spindle



KURAKI KBT 13

X) 118", Y) 78", Z) 51", W) 27"

B) CONTOURING ROTARY TABLE 64" x 72"

1500 rpm Spindle



KURAKI KBT 11

X) 66", Y) 46", Z) 45", W) 19"

B) CONTOURING ROTARY TABLE 47" x 55"

1500 rpm spindle



KURAKI KBT 10

X) 59", Y) 39", Z) 31", W) 19"

B) CONTOURING ROTARY TABLE 38" x 43"

1500 rpm spindle





Canyon Industries, Inc. Fabrication Capabilities

- High bay shop with 15-ton overhead crane
- 25-ton lifting capability
- Ferrous and non-ferrous welding equipment
- Blasting and painting facilities
- Automatic bandsaw for cutting quantities of same-length material
- A crew of highly trained polishers for precision finishing of castings and machined parts



Figure 3: A572 steel housing and ANSI 300 Class water delivery system at Canyon's Deming facility

ASTM/ASME A515-70 Welding Procedure Index (additional available upon request):

1. CII-01 – FCAW, Fillet, Unlimited thickness, PQR 3F
2. CII-02 – FCAW, Fillet, Unlimited thickness, PQR 1F & 3F
3. CII-03 – FCAW, Double “V”, 1/8” – 2-1/2” thickness, PQR 3G
4. CII-04 – FCAW, Double “V”, 1/8” – 2-1/2” thickness, PQR 1G & 3G
5. CII-05 – SMAW, Fillet, Unlimited thickness, PQR 3F
6. CII-06 – SMAW, Fillet, Unlimited thickness, PQR 1F & 3F
7. CII-07 – SMAW, Double “V”, 1/8” – 2-1/2” thickness, PQR 3G
8. CII-08 – SMAW, Double “V”, 1/8” – 2-1/2” thickness, PQR 1G & 2G



Figure 4: 4.3 meter diameter A572 steel housing and ANSI 300 Class water delivery system fabricated by Canyon